

**Duane F. Christopher &
Associates, LLC**
2424 India Hook Road, Suite 220
Rock Hill, South Carolina 29732



Landscape Architecture – Site Design – Planning – Residential House Design –
Environmental Planning

VOICE 803-366-6268 dfachr@hotmail.com www.DuaneDesign.com

Resume & Vita

Forward



by



A handwritten signature in black ink, appearing to read "Duane F. Christopher".

It is truly my pleasure and honor to present my qualifications and my experience that includes over thirty-four years in design of projects from my early years of practice starting in 1981 to the present. What our practical experience relates to each project is that everyone is different, but the design methods have been the same whether it is a small six hundred square foot court yard or a six hundred acre master planned community.



It has been the personal communication and relationships that have made it all the more enjoyable. We have been in the field to identify wetlands and endangered species. We have designed streets, subdivisions, parking lots, greenways, pedestrian walkway systems, pools, water features, bio retention ponds, water gardens, sculpture monuments, signage and single family houses. It is a journey we enjoy, absorb and use those experiences for new places and systems.

We are very enthused, especially now when sustainable design is much more in the lime light after many years of preaching.

Duane F. Christopher, PLA, ASLA, LEED GA

- **EDUCATION**
- Bachelor of Science, Landscape Architecture program, Cornell University, 1977
- Landscape Planner, Reasoner Landscape Architects, Bradenton, FL, 1977 – 1979
- Partner Design Build CP Landscape, Rock Hill, SC 1979 - 1981
- **PROFESSIONAL ACTIVITIES, years in business 34.**
- Duane F. Christopher, ASLA, Landscape Architect, 1981-1987
- Duane F. Christopher & Associates, Principal, 1987 – Present
- Duane Francis Christopher, P. Landscape Architect, 2013 - Present
- Registered Landscape Architect in North Carolina, #372, 1981
- Registered Landscape Architect in South Carolina, #324, 1982
- Licensed Landscape Architect in Virginia, #1122, 2002
- Member American Society of Landscape Architects since 1982
- Member of USGBC 2009, LEED Green Associate, 2011
- Member of USGBC North Carolina Chapter, since 2009

MAJOR ACCOMPLISHMENTS IN LAND PLANNING AREA

Christopher spent time and resources on behalf the City of Rock Hill to promote ideas for revitalization of the downtown main street area, including public presentations. The Empowering The Vision city planning process, which was a two year long range process to develop strategic incentives for the City, Christopher spent time and resources to promote a greenway master plan and make major changes in the physical structure of the

old downtown main street development.



As a futures development committee member, Christopher has been involved with promoting River Park on the Catawba River and other recreational and pedestrian oriented development activities to improve the quality of life in the City of Rock Hill.

As a member of the Regional Waste Water environmental sub-committee, Christopher was a steering force in looking at alternative methods to a regional approach to wastewater treatment, instead of one large regional plant that would be an insensitive engineering approach to the regions wastewater treatment needs. He brought in experts in decentralization and constructed wetlands for wastewater treatment.

Water Quality Forum panelist on wastewater treatment comprehensive planning for the Catawba Wateree watershed, promoting Conservation Districts in a planning leadership role.



WETLANDS CONSULTING AND ENVIROMENTAL PLANNING



Since 1991 I have made wetland determinations and delineations for corporate clients such as State Farm, Budweiser, Rock Hill School District, and many private developers. These delineations are US Army Corp approved as I am an approved Wetland Consultant. I am a Past Wetland

Scientist Society Member. I have designed bio retention storm drains and recirculation ponds for stormwater reuse and gardens. We also have made recommendations for gray water filtration as alternative waste water systems for residential and commercial projects.

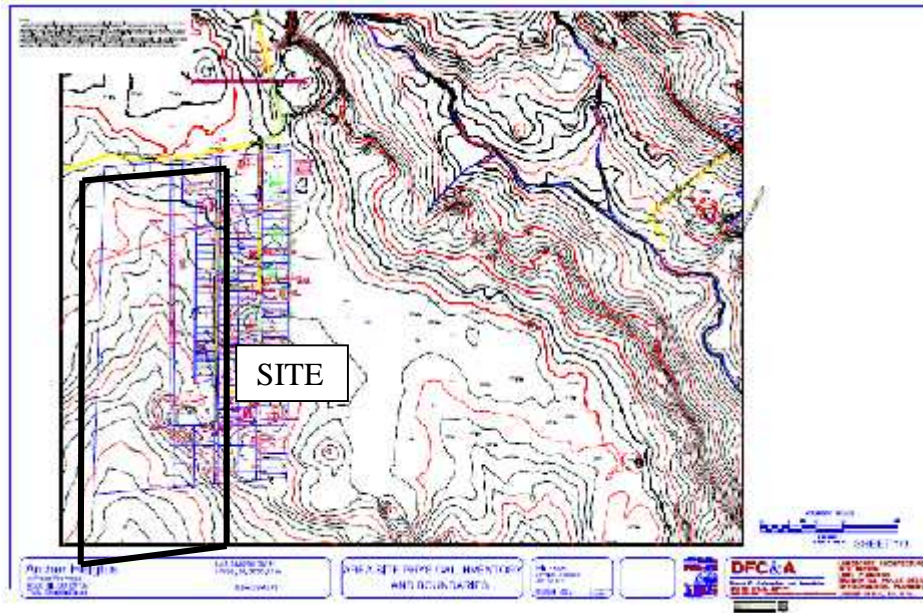
Constructed Wetlands and Wastewater Management

Blackmon Road Community area Constructed Wetlands Assessment and Wastewater Management Report For A Place for Hope, Rock Hill, South Carolina



Blackmon Road Community area Constructed Wetlands Assessment and Wastewater Management Report Summary

Rock Hill, South Carolina 29730



The site is located in York County, South Carolina adjacent to the Rock Hill City limits. Access to the area is from Blackmon Road which is south of Albright Road.

The project boundary is defined above. There are 48.4 acres defined by the boundary. There are approximately fifty (50) residents in seventeen (17) residential structures. The properties are in need of sustainable long term solutions to waste water treatment and management. Our task was to make an assessment of the environmental conditions and what options if any were available to solve the waste water management based on the site analysis.

The opportunity for a sustainable community using alternative methods of managing wastewater (both black water and gray water) is possible. It is possible through some combination of the alternative collection, pretreatment and simple treatment systems to provide wastewater services and public health protection for this community. Onsite wastewater management using traditional septic tanks and drainfields is currently difficult or impossible due to the existing soil system (rock and/or the lack of suitable soil). Wastewater design constraints include poor soil conditions and a need for simple, low cost, yet sustainable solutions.



Septic flowing on surface.



New areas for wetlands.

Constructed wetland treatment systems are simple and cost effective treatment and disposal systems for both individual residences and small community systems. Designed and constructed wetlands are attached-growth biological filters that utilize vegetation adapted to grow in saturated (or nearly saturated) environments. With the inclusion of vegetation, treatment wetlands have the appearance of a natural wetland habitat and employ many of the biological processes found in natural wetland ecosystems.



Constructed wetlands

He strikes a balance

Advocate of open space also leads development team

NEWSMAKERS

By MARK HANSEN
 The man who has spent the last 10 years of his life advocating for open space and environmental protection is now leading a team of developers to build a new residential development in the heart of the city. The project, which will include a mix of housing and commercial space, is a testament to the man's ability to strike a balance between development and nature.

For the past 10 years, Hansen has been a vocal advocate for open space and environmental protection. He has worked with various organizations to promote the benefits of green spaces and has been instrumental in the creation of several parks and trails in the city. His efforts have not gone unnoticed, and he has been recognized for his work on several occasions.

Now, Hansen is leading a team of developers to build a new residential development in the heart of the city. The project, which will include a mix of housing and commercial space, is a testament to the man's ability to strike a balance between development and nature. Hansen has worked closely with the city and various organizations to ensure that the development is designed to be environmentally friendly and to provide a high quality of life for its residents.

The project, which will include a mix of housing and commercial space, is a testament to the man's ability to strike a balance between development and nature. Hansen has worked closely with the city and various organizations to ensure that the development is designed to be environmentally friendly and to provide a high quality of life for its residents.

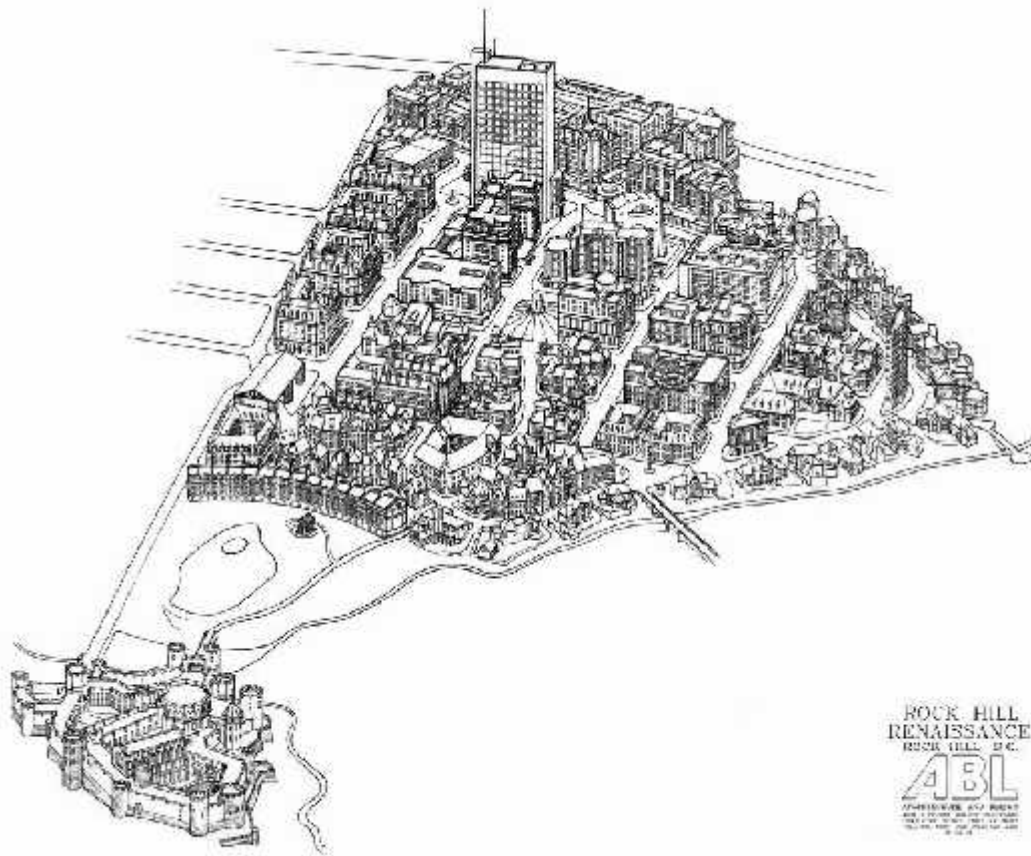
The project, which will include a mix of housing and commercial space, is a testament to the man's ability to strike a balance between development and nature. Hansen has worked closely with the city and various organizations to ensure that the development is designed to be environmentally friendly and to provide a high quality of life for its residents.

Hansen's approach to development is based on the idea of "green development," which emphasizes the use of sustainable materials and practices. He believes that development should be designed to be environmentally friendly and to provide a high quality of life for its residents. Hansen's approach to development is based on the idea of "green development," which emphasizes the use of sustainable materials and practices.

Hansen's approach to development is based on the idea of "green development," which emphasizes the use of sustainable materials and practices. He believes that development should be designed to be environmentally friendly and to provide a high quality of life for its residents. Hansen's approach to development is based on the idea of "green development," which emphasizes the use of sustainable materials and practices.



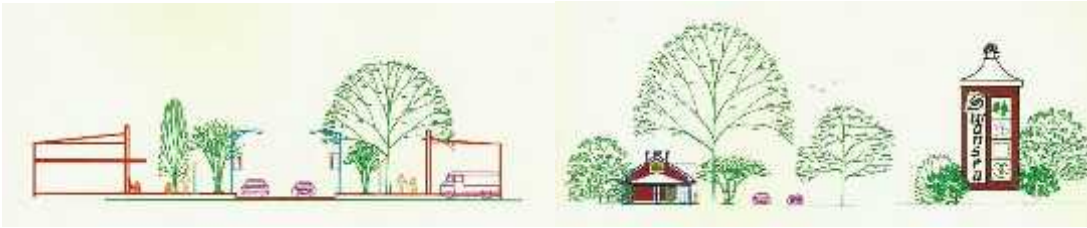
Mark Hansen, advocate of open space and environmental protection, is now leading a team of developers to build a new residential development in the heart of the city.



This is a SketchUp model of a single family home and landscape that Duane worked on, Lake Wylie, SC. 2006.

BELOW ARE SOME REPRESENTATIVE CLIENTS OVER THE PAST 33 YEARS.

Swansea, SC, Streetscape



We provided the town of Swansea with a manual to develop their entrances and streetscapes. 2004



AME Properties, Rock Hill, SC Medical and business office park.

We just completed an early schematic plan. This plan shows one, two and three story office buildings and related parking and pedestrian circulation. The SketchUp model is by Tripp Barrineau. October 2009.



Carolinas II, a 600 acre site just south of the North Carolina border, Master Planned community.

This integrated mixed use community was designed for retail, entertainment, residential sustainable community in 1994. The plan shows vehicular circulation system, an independent pedestrian circulation as well as a raised monorail that was to connect to Carowinds Theme Park. Included in the plan is a six live theater complex, farmers market, Museum of York County, hotels, movie studios, and a major regional retail outlet mall complex of two million square feet. This community had a development cost of four hundred fifty million dollars in 1994.



Harlinsdale subdivision, Rock Hill, SC, Warren Norman Co.
Fairlawn Villas, Rock Hill, SC, Flint Development
Steeple Chase, Rock Hill, SC, Flint Development
Westgate PUD, Rock Hill, SC



Sculptures, Monuments and Entrances

RiverPointe, Charlotte, NC, RiverPointe Association
Olde York Farms, York, SC, Nations Land Co.

“Equimonts”

“New markers brand Olde York Farms community.

Marking the boundaries of Olde York Farms is a series of huge monuments designed by [Duane F. Christopher & Associates](#) of Rock Hill, South Carolina.



1.

“Equimonts”

These works of stone, wood and iron represent the design philosophy established by Nation Land Company to create a sense of place and permanence that will mark the historically significant land for years to come.

Each element of the monuments holds meaning—the shape is classical a style, the base is reminiscent of an old fortress foundation used in medieval times, the top is a classical monument and pyramid shape dating back to Egyptian architecture, the wood beam represents the farm and the iron rings symbolize the equestrian tie for the horse.



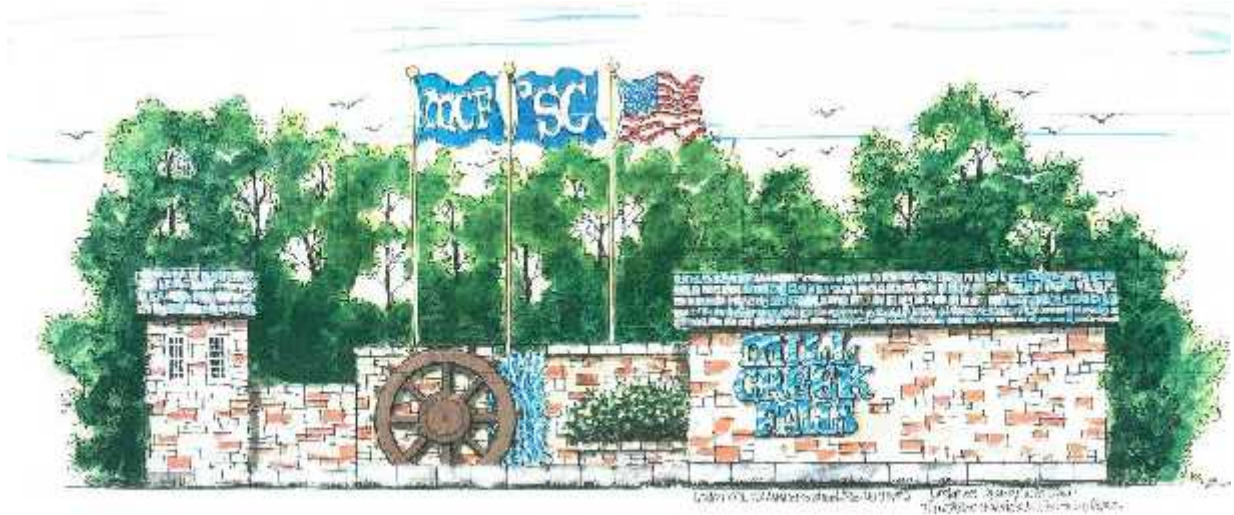
This is a planting and circulation project for Cope Construction in Rock Hill. Rendering by Tripp Barrineau. Installed November 2008.





A 100 acre Master Plan in Fort Mill, SC was later annexed in to Tega Cay.

This project was designed for a multi-use commercial and residential site near Tega Cay, SC. The main road in became the alternative road into the City of Tega Cay. The property was annexed into Tega Cay and a Walmart was constructed on the site.



This entrance structure was used for a 220 acre subdivision that we designed in 2000.

Urban Design and Master Planning

Swansea, SC, Streetscape

Kershaw, SC, Streetscape

Rock Hill, SC, Greenways

Fort Mill, SC, Greenways



Land Planning and Zoning

AME Properties, Rock Hill, SC

R.B. Ryne properties, York Co., SC

Mill Creek Falls, Clover, SC

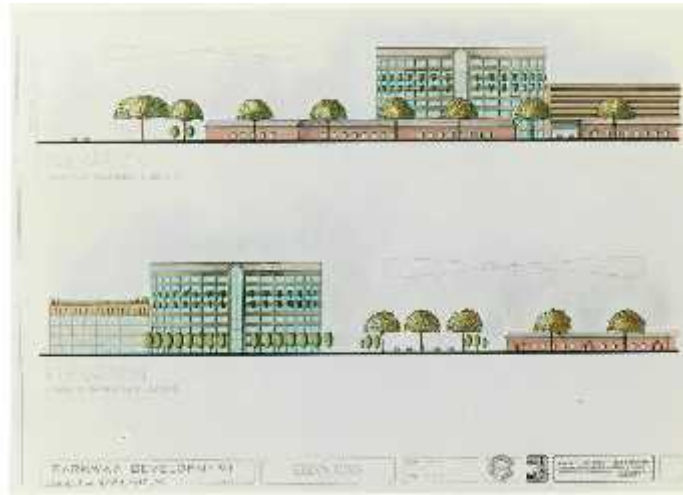
Harlinsdale, Rock Hill, SC, Warren Norman Co.

Meadow Lakes II, Rock Hill, SC

Wedgewood, Rock Hill, SC

Commercial Site Design

Rainy Days Commercial Development, Rock Hill, SC
Love & Cherish Day Care Center, Rock Hill, SC
J.M. Cope Construction office, Rock Hill, SC
Garcia Outfit Convenient Store, Rock Hill, SC
Best Buy, Rock Hill, SC
The Courtyard at Winthrop, Winthrop University, Rock Hill, SC
BP Gas Station, Herlong Avenue, Rock Hill, SC
Whisper Creek Apartments, Rock Hill, SC
Circle at South End Apartments, Charlotte, NC
Woodfield Elizabeth I & II, Charlotte, NC
Spectrum Apartments, Charlotte, NC
East Lincoln VFD, Lincoln Co., NC, with Garner & Brown Architects
Peach Tree Executive Apartments, Fort Mill, SC, The Springs Company, with Garner & Brown Architects
Dr. Dickey Dental Office, Rock Hill, SC
Northwood Square, Rock Hill, SC, Warren Norman Co.
Nourse Auto Dealership, Richburg, SC, with Joel E. Wood & Associates
Richburg I-77 exit 65 interchange, Richburg, SC
B&B Distributors, Rock Hill, SC
Rock Hill Woman's Club House, Rock Hill, SC
Highway 21 Car Wash, Fort Mill, SC, Pintail Partners, Charlotte
BP Little Giant Convenience stores, Rock Hill, SC
Hella Lighting, York, SC
University Place Apartments, Rock Hill, SC
The White Horse Restaurant, Rock Hill, SC
Wachovia Bank, Greenville, SC
NCNB, Greenville, SC



Institutions

The Emanuel Lutheran Church, Rock Hill, SC
Oakland Baptist Church, Rock Hill, SC
Trinity United Methodist Church, York, SC
York County Government, SC
Woodhaven Methodist Church, Rock Hill, SC
St. Anne's Catholic Church, Rock Hill, SC
Rock Hill School District, Northwestern High School
Museum of York County, York Co., SC
First Presbyterian Church, York, SC

Wetlands & Environmental Consulting

St. Anne's Catholic Church and School
Family Auto Sales, LLC

Lancaster Airport, Richard Odom & Associates, Rock Hill, SC
Eagle Engineering, Indian Trail, NC
Harbor Cove, Rock Hill, SC, Parkline Development
Mill Creek, Lake Wylie, SC
Rock Hill School District
Erskine College
Miffler Water District of Fairfield Co. SC, with Joel E. Wood & Associates
Bostic Brothers, of NC

Other

Grandview Memorial Park Twin Lakes, Rock Hill, SC, Cemetery site design



Residential Landscape Architecture

Over 500 single family residential design projects.
Several Apartment Developments.

HARDSCAPING UTOPIA

Landscape isn't just verdant vistas; non-plant areas balance out lush

By Lauren Hoyt
The Post-Record

When landscape architect Bruce Christopher staged a party earlier this month at the home of the late architect of a garden at the Walden Club in Fosh BE, the scene was a little like this: "We really did not have a large area being in the garden," said Christopher. "Many people are not used to the idea of a large area being in the garden." Christopher said the idea was to create a space that was not just a garden but a place where people could enjoy the outdoors.



Bruce Christopher

And it's not just the garden.

Christopher's approach to landscape design is to create a space that is not just a garden but a place where people can enjoy the outdoors.

Christopher's approach to landscape design is to create a space that is not just a garden but a place where people can enjoy the outdoors. He uses a variety of materials and techniques to create a space that is both functional and beautiful.

Karen Anderson, 2012, of
The Post-Record



David Mosper and Bruce Fisher's courtyard features two fountains, including this wall-mounted one.



The sloping backyard at Liberty and Marquette Street's Park Hill Home was made into a useful outdoor space through the use of hardscape, including brick, wrought-iron, cast-iron and lighting.



Individual wooden pergolas create a sense of structure and define the garden's layout.

Photo: The Post-Record



<http://www.youtube.com/user/duanedesign>



SELECTED HONORS AND AWARDS IN THE COMMUNITY AND DESIGN PROFESSION

A participant at the University of Massachusetts first symposium on Computers in Landscape Architecture, 1984

A member of the South Carolina State Board of Landscape Architects, 1989-1993, Chairman, 1992, 1993.

Elected Soil and Water Conservation Commissioner of York County SC, 1992-to Present, Chairman, 1995-1999 Appointed Commissioner 2000 - present

York County Committee to formulate Storm-water Management and Soil Erosion ordinances for the county, 1988, 1989

City of Rock Hill, South Carolina, Tree Commissioner, a founding Commissioner, 1988-1993, Chairman, 1992, 1993

City of Rock Hill Empowering the Vision committee Member, Garden City sub-committee, 1987-1988, Designed Master Plan for Greenways. Made major contribution to remove mall covering Main Street and return to a motor vehicle street.

City of Rock Hill, sub-committee, Commission on future development and facilities for PRT, 1995-present

Catawba Regional Waste Water Treatment environmental sub-committee Member, 1995-2000.

Protecting the Catawba



Photo by Andy Garcia / The Record

Duane Christopher of Bank Hill, a York County former commissioner, looks through a spotting scope as part of the 170-acre easement on property along the Catawba River adjacent to Landsford Canal State Park on Wednesday afternoon. Charlotte-based Crescent Biosciences donated the property to the Katoomba Valley Land Trust.

Duke Energy company gives 170 local acres for river conservation

By Jason Cate
The Record

LANDSFORD CANAL STATE PARK — A plan to protect hundreds of miles of river banks and streambanks has been announced by Crescent Biosciences, a Charlotte-based environmental protection company.

Crescent Biosciences announced Wednesday it is permanently designating 170 acres of property along the Catawba River to land trusts in the Charlotte area.

The Katoomba Valley Land Trust received a 170-acre easement on property neighboring Landsford Canal State Park in Chester County.

Crescent Biosciences, the real estate development arm of Duke Energy, also gave the Catawba Land Conservancy a 100-acre easement along Catawba Creek and

protect nearly 200 miles of river banks and streambanks in the Carolina.

"This certainly was a great day for the Catawba River," said Lindsay Petrus, president of the Katoomba Valley Land Trust. "We have hundreds of thousands of people drinking from the Catawba River, and we need to protect it. Crescent Biosciences has set a high standard."

In addition, the company has also established a \$100,000 fund to provide grants for other property owners along the Catawba River to create additional easements.

Celia DuPon, Crescent's director of environmental affairs, said the grants will help pay for survey costs and legal fees. She estimated that the money will help protect another 100 miles of river-



Member and Chairman of Committee for York County for the purpose to preserve land to create a county commission to develop easements and purchase of development rights. 1997

Member of York County Forever Commission, a land preservation commission for York County formed from the above Committee, 1998-2005, Chairman, 1998-1999



YORK COUNTY COUNCIL

T. Steve McNeely, Chairman
District 3

Jeff Updike, Vice-Chairman
District 1

W. Perry Johnston
District 2

Roy Blake
District 4

Curwood Chappell
District 5

Buddy Motz
District 6

Rick Lee
District 7

January 26, 2006

Mr. Duane Christopher
1211 Rittenhouse Lane
Rock Hill, South Carolina 29732

Dear Mr. Christopher:

On behalf of the York County Council, I wanted to thank you for your many years of service as a member of the York County Forever Commission. Your expertise and experience were vital to the success of the Board. The Council and the citizens of York County have certainly benefited from your efforts. The Board members and volunteers are an irreplaceable asset to the County. I appreciate your time and your hard work in an often thank-less job. I am sure your presence and proficiency will be missed.

Again, thank you for your service. If there is ever anything that I can do for you, please do not hesitate to contact me.

Sincerely,

T. Steve McNeely, Chairman
York County Council

6 South Congress Street, Post Office Box 66, York, South Carolina 29745-0066
Telephone: (803) 684-8511 Fax: (803) 684-8530 Web: www.yorkcountync.gov

Member of the Catawba River Study Commission, Implementation Task Force 1999-2003

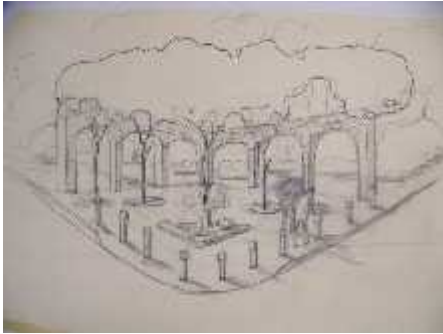
City of Rock Hill Trails and Greenways Task Force charter Member, Chairman, 2000-2003, Chairman of advisory committee to PRT, 2003 – February 2009.



City of Rock Hill Planning Commission February 2009 – present.
City of Rock Hill Manchester Meadows Task Force charter Member, A City of Rock Hill Soccer Sport Complex and Park, 2001
York Conservation District Special Recognition Award, for Diligence and Dedication for Waste Water Treatment Project, received October 23, 2001



Miscellaneous quick sketches.



Corner view of a park, quick pencil sketch and plan concept.



Proposed Interstate monument in Richburg, SC
Canal Locke



Monument concept sketch of River Pointe
On the Catawba River.