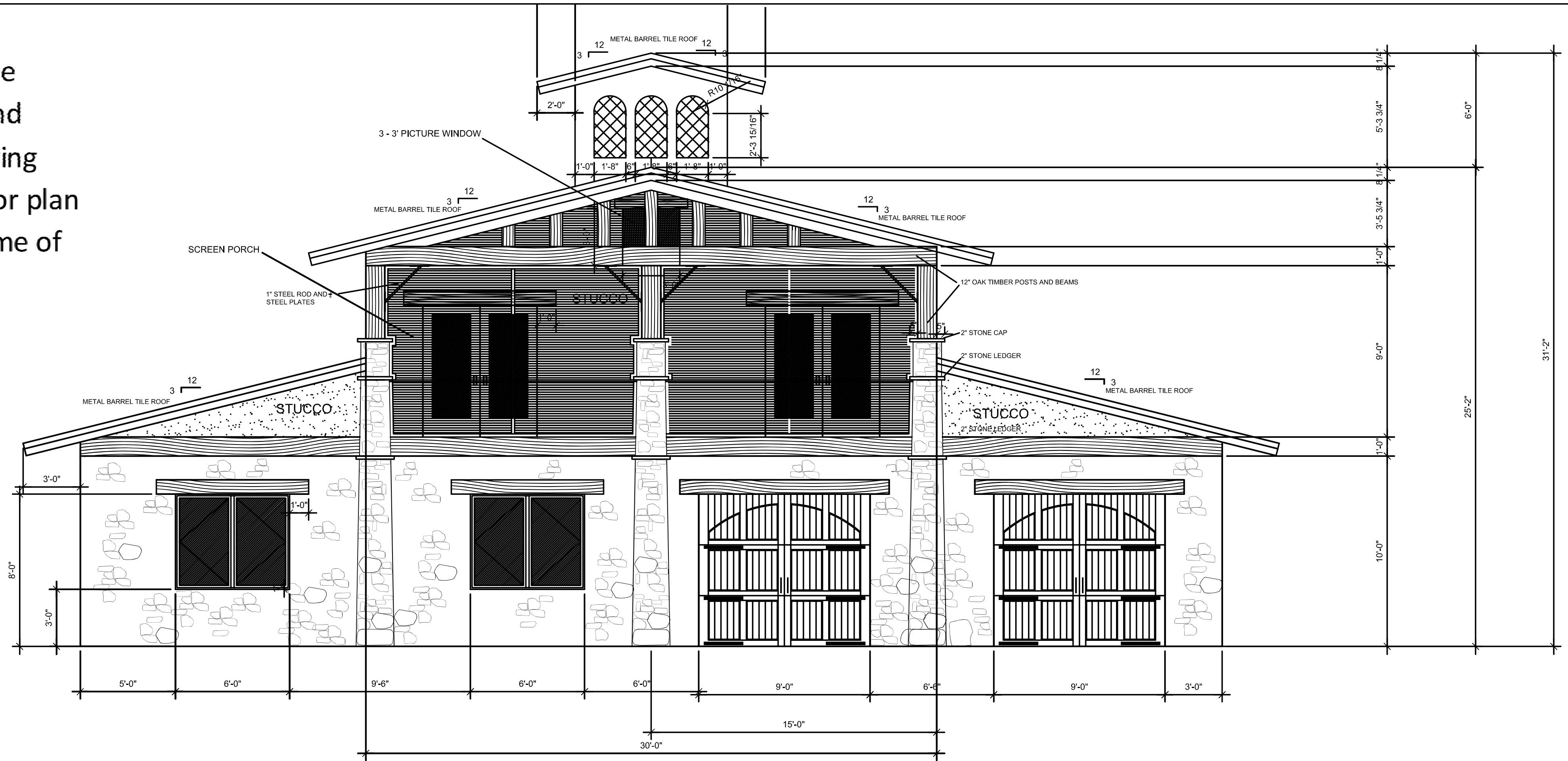
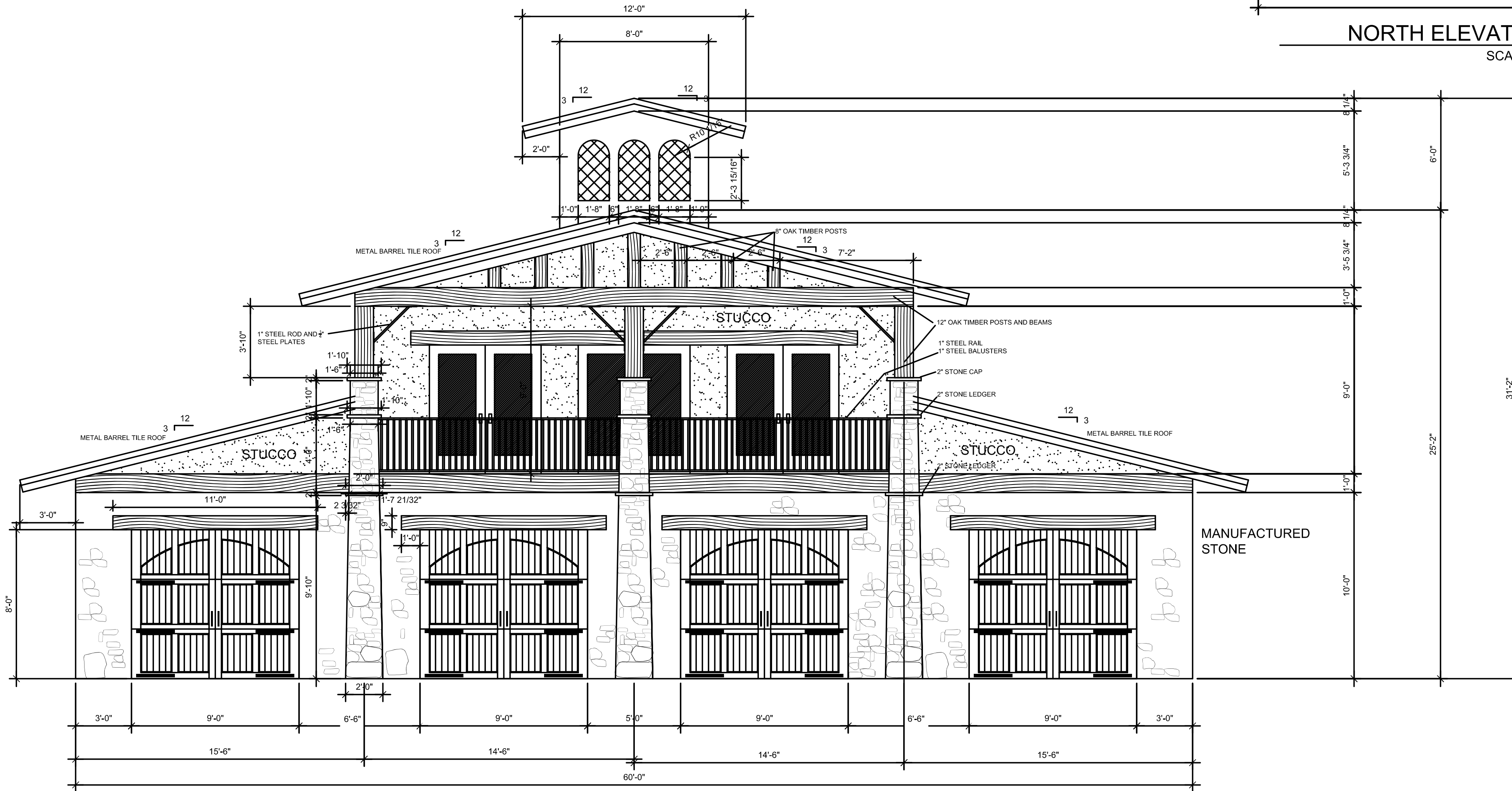


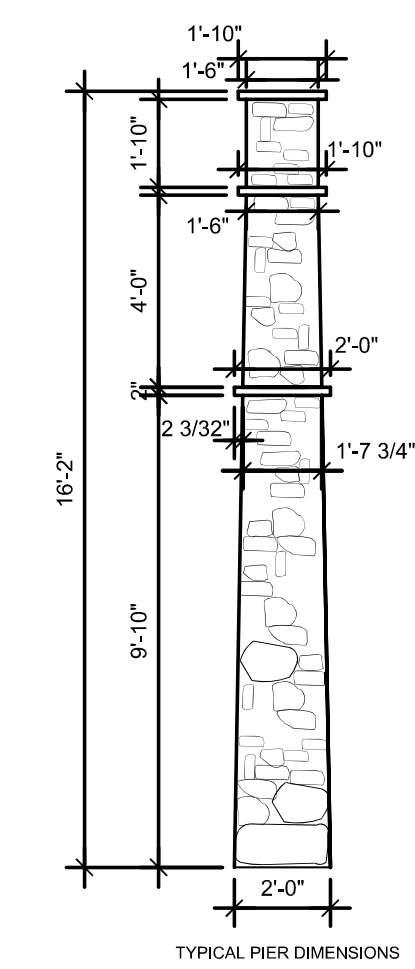
The Boccio Carriage House was a design project for a multitude of uses in the prescribed program. The program included multi vehicle storage, a shop, and office area on the first level. The walk up to the second level contained a living space with kitchen, a master suite, extra bedroom, large bath, and open floor plan to screen porch and decks. The Italian Tuscan theme was to reflect the theme of the new main house.



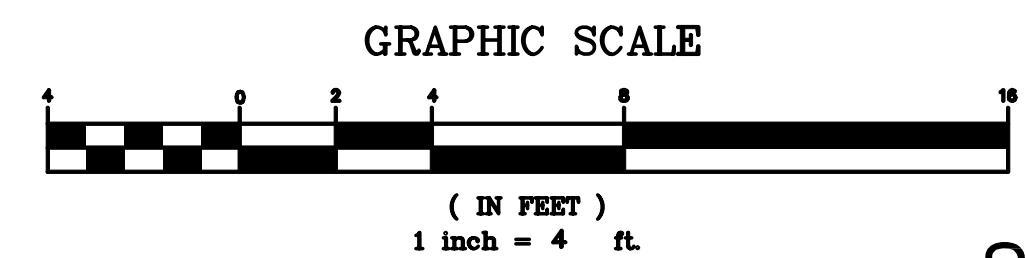
NORTH ELEVATION
SCALE: 1/4" = 1'-0"



SOUTH ELEVATION option a
SCALE: 1/4" = 1'-0"



TYPICAL PIER DIMENSIONS



GRAPHIC SCALE

SHEET 7/10

Boccio Cruz Residence
Edgemoor, SC 29712

LAT 34.48.58.66" N
LONG. 81.00.08.04" W
ELEVATION: 606 ASL

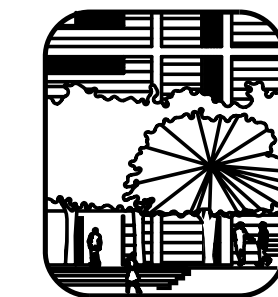
NORTH & SOUTH ELEVATIONS

Scale: 1"=4'-0"

Date: 2-22-2017

PROJECT # 2282
DRAWING # 2282.arch.2

LTSCALE 1
ALD2004



Duane F. Christopher & Associates, LLC

2424 INDIA HOOK RD., SUITE 220
ROCK HILL, SC 29732-1278
(803) 586-6289

www.DuaneDesign.com dfaorch@hotmail.com

LANDSCAPE ARCHITECTURE
SITE DESIGN COMMERCIAL
LAND PLANNING
RESIDENTIAL HOUSE DESIGN
ENVIRONMENTAL PLANNING
LICENSED IN N.C., S.C. & VA.

