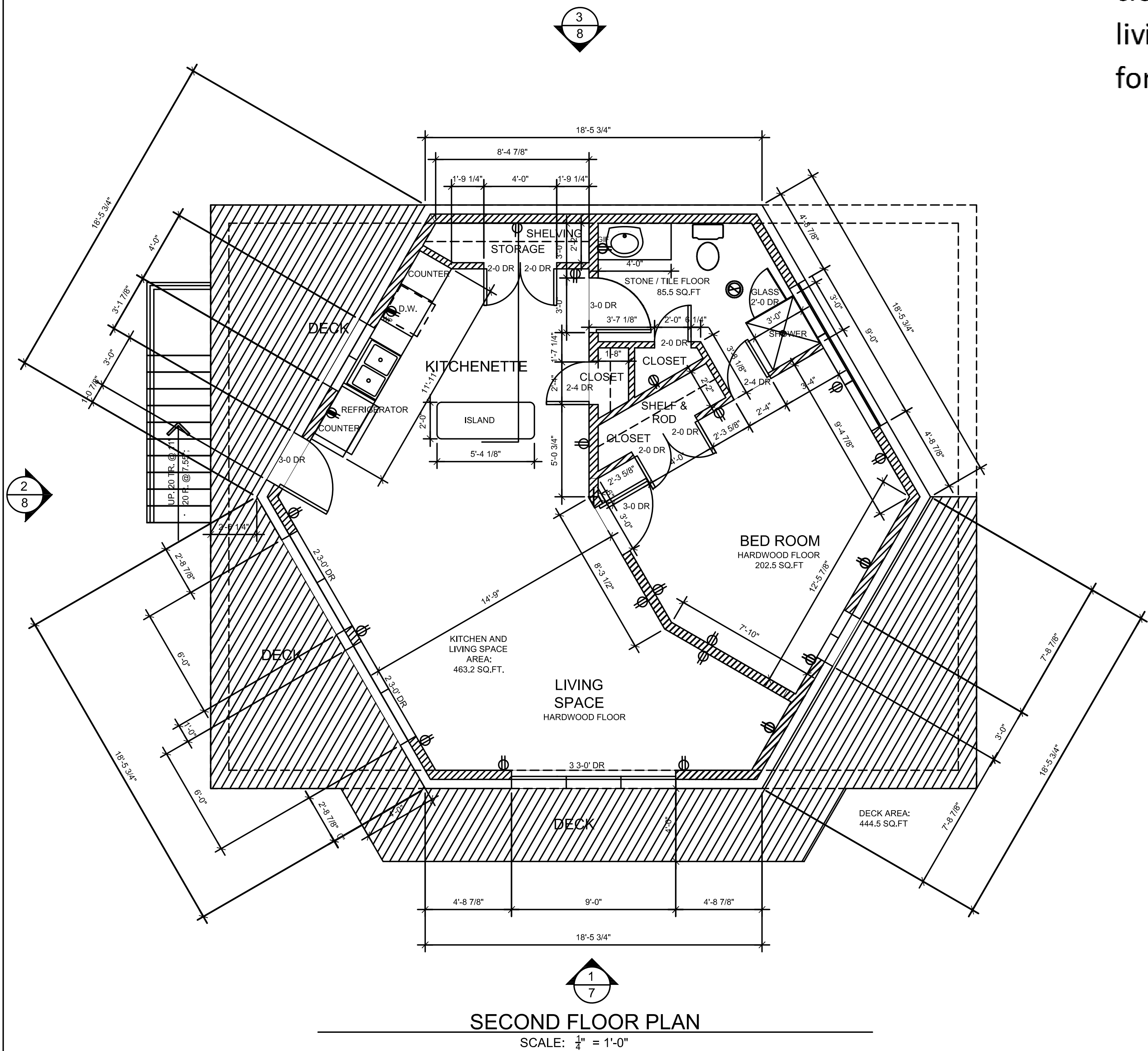
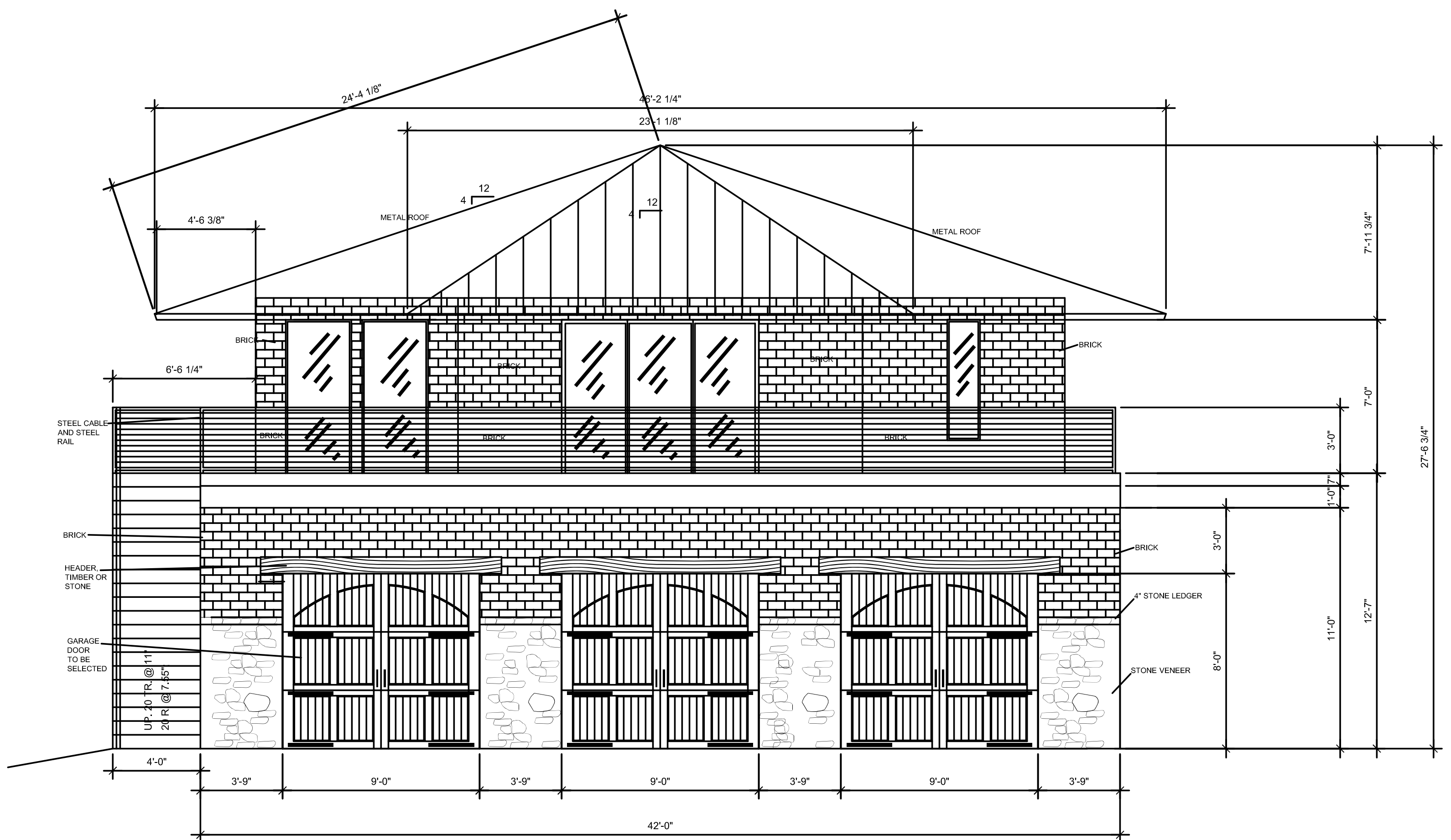


The Tedde Carriage House was a design project for a multitude of use in the prescribed program. The program included multi vehicle storage, a shop, game cleaning area, and tool shop areas on the first level. The second level contained a living space with kitchen, bedroom, bath, and open floor plan. The octagonal form reflected the form of the adjacent main house.



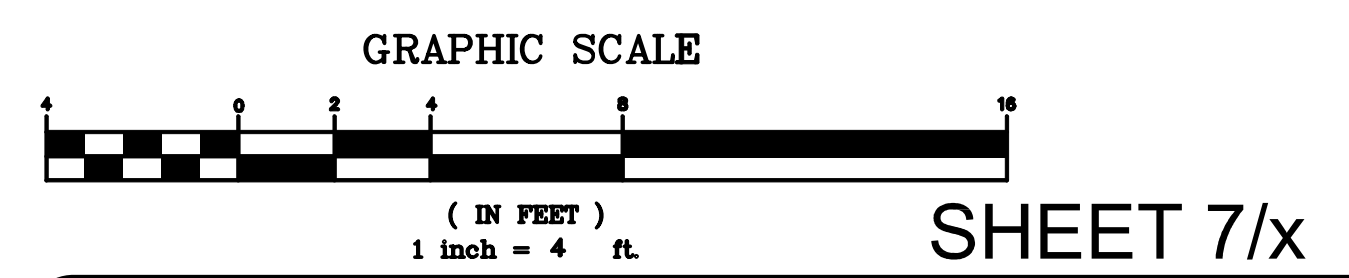
SECOND FLOOR PLAN
SCALE: 1/4" = 1'-0"



WEST ELEVATION
SCALE: 1/4" = 1'-0"

SECOND FLOOR AREAS:

KITCHENETTE AND LIVING SPACE	463.2 SQ.FT.
BEDROOM:	202.5 SQ.FT.
BATHROOM:	85.5 SQ.FT.
TOTAL HEATED:	751.2 SQ.FT.
TOTAL AREA OUTSIDE WALL:	886.7 SQ.FT.
DECK AREA:	444.5 SQ.FT.

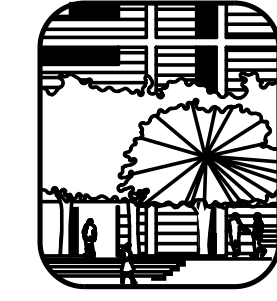


Tedde Residence
Clover, SC 29745
Tioga Point - Lake Wylie

LAT 35.04.18.64" N
LONG. 81.04.19.34" W
ELEVATION: 590 ASL

**CARRIAGE HOUSE
SECOND FLOOR PLAN
& WEST ELEVATION**

Scale: 1" = 8'-0"
Date: 8-6-2017
PROJECT # 2289
DRAWING # 2289.a.4
LTS/SCALE 1.0
ALD2004



Duane F. Christopher & Associates, LLC
2424 INDIA HOOK RD., SUITE 220
ROCK HILL, SC 29732-1278
(803) 366-6266
www.DuaneDesign.com dfaerh@hotmail.com
LANDSCAPE ARCHITECTURE
SITE DESIGN
LAND PLANNING
RESIDENTIAL HOUSE DESIGN
ENVIRONMENTAL PLANNING
LICENSED IN N.C., S.C. & VA.

Tedde Residence

Project 2289